

BUET ORGANOGRAM

OFFICE OF THE VICE CHANCELLOR (16)

1 X Vice Chancellor

Post: 15

1 X Assistant Registrar (Co-Ordination)

1 X P.S. To V.C

1 X Stenographer (PA)

1 X LDA cum Typist

1 X Driver

1 X Cook

1 X Attendant

3 X MLSS

3 X Security Guard

1 X Mali

1 X Sweeper/Jamader

OFFICE OF THE PRO-VICE CHANCELLOR (16)

1 X Pro-Vice Chancellor

Post: 15

1 X Assistant Registrar (Co-Ordination)

1 X A.P.S. To Pro-V.C

1 X Stenographer (PA)

1 X LDA cum Typist

1 X Driver

1 X Cook

1 X Attendant

3 X MLSS

3 X Security Guard

1 X Mali

1 X Sweeper/Jamader

BUET ORGANOGRAM

OFFICE OF THE REGISTRAR (224)

1 X Registrar

General Wing (8)

1 X Assistant Registrar/Deputy Registrar*
 1 X Administrative Officer
 1 X Management Information Officer
 1 X Stenographer (PA)
 1 X Data Entry Assistant
 1 X LDA-cum-Typist
 2 X MLSS

Admin, Council & Legal Section

Post: 177

1 X Deputy Registrar
 2 X MLSS

Establishment & Academic Section

Post: 38

1 X Deputy Registrar
 2 X MLSS

Council Affairs Wing (13)

1 X Assistant Registrar
 1 X Administrative Officer
 1 X Head Assistant
 1 X UDA
 1 X Reprographic Operator
 1 X LDA-cum-Typist
 1 X Mechanics (Dup./Pho.)
 3 X Pressman
 1 X Binder/Daptori
 2 X MLSS

Establishment Wing (25)

2 X Assistant Registrar
 5 X Administrative Officer
 1 X Sr. Reprographic Operator/ H.A
 2 X Head Assistant
 4 X UDA
 4 X LDA-cum-Typist
 1 X Record Keeper
 1 X Record Supplier
 5 X MLSS

Common Service Wing(15)

1 X Administrative Officer

(Dispatch)

2 X UDA
 2 X LDA-cum-Typist
 2 X Dispatch Rider
 2 X Messenger
 2 X MLSS

(Stationary Store)

1 X Store Keeper/ Senior Store Keeper*
 1 X LDA-cum-Typist
 1 X Store Assistant
 1 X MLSS

Academic & Scholarship Wing(11)

1 X Programmer/Senior Programmer*
 1 X Assistant Registrar
 1 X Administrative Officer
 1 X Assistant Programmer/Programmer*
 1 X Head Assistant
 1 X UDA
 1 X Data Entry Assistant
 1 X LDA-cum-Typist
 1 X Record Keeper
 2 X MLSS

Estate, Legal & Security Wing(145)

1 X Legal Advisor/ Asst. Registrar

(Estate & Legal)

1 X Administrative Officer
 1 X Head Assistant
 1 X LDA-cum-Typist
 1 X MLSS

(Security)

1 X Security Officer
 2 X Security Inspector
 2 X UDA
 1 X LDA-cum-Typist
 5 X Head Security Guard
 10 X Campus Security Guard
 119 X Guard

BUET ORGANOGRAM

OFFICE OF THE COMPTROLLER (63)

Post: 4

- 1 X Comptroller
- 1 X Stenographer (PA)
- 2 X MLSS

Fund, Cash & Welfare

Post: 23

- 1 X Deputy Comptroller
- 1 X Programmer/Senior Programmer*
- 2 X Assistant Director
- 2 X Accounts Officer
- 1 X Assistant Programmer/Programmer*
- 3 X Accountant
- 2 X Cashier
- 3 X Assistant Accountant
- 1 X Data Entry Assistant
- 1 X Accounts Assistant
- 1 X Typist-cum-Clerk
- 1 X Assistant Cashier
- 1 X Sorter
- 1 X Cash Peon
- 2 X Attendant

Salaries & Allowances

Post: 12

- 1 X Assistant Director
- 1 X Accounts Officer
- 3 X Accountant
- 5 X UDA/ Assistant Accountant
- 2 X Accounts Assistant

Bills, Student Affairs

Post: 15

- 1 X Assistant Director
- 2 X Accounts Officer
- 4 X Accountant
- 1 X Assistant Accountant
- 2 X Typist-cum-Clerk
- 2 X Accounts Assistant
- 3 X MLSS/Attendant

Finance & Budget

Post: 9

- 1 X Assistant Director
- 1 X Accounts Officer
- 1 X Accountant
- 1 X Assistant Accountant
- 1 X Typist-cum-Clerk
- 1 X Accounts Assistant
- 1 X Sorter-cum-Attendant
- 1 X Record Supplier-cum-Cleaner
- 1 X Messenger-cum-Attendant

BUET ORGANOGRAM

AUDIT OFFICE (10)

1	X	Deputy Comptroller
1	X	Assistant Director
2	X	Accounts Officer(Audit)
1	X	Accountant
1	X	Assistant Accountant(Audit)
1	X	Assistant Accountant
1	X	Data Entry Assistant
1	X	Accounts Assistant
1	X	Attendant

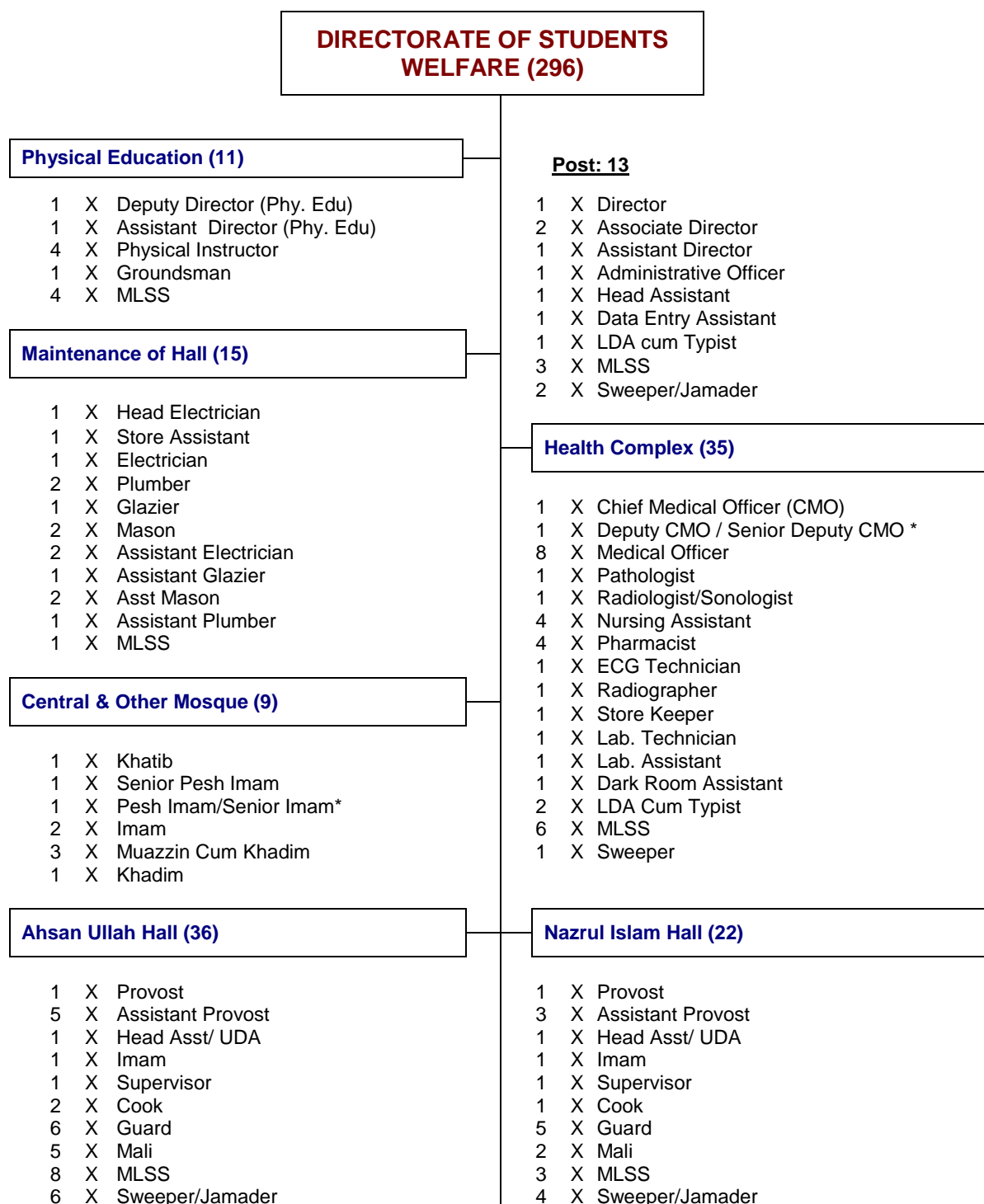
CONTROLLER OF EXAMINATIONS (22)

1	X	Controller of Examinations
1	X	Deputy Controller of Examinations
1	X	Programmer/Senior Programmer*
2	X	Assistant Controller of Examinations
1	X	Administrative Officer
2	X	Assistant Programmer/Programmer*
1	X	Stenographer (PA)
3	X	UDA
1	X	Reprographic Operator
3	X	Data Entry Assistant
1	X	LDA-cum-Typist
1	X	Binder
4	X	MLSS

CENTRAL LIBRARY (46)

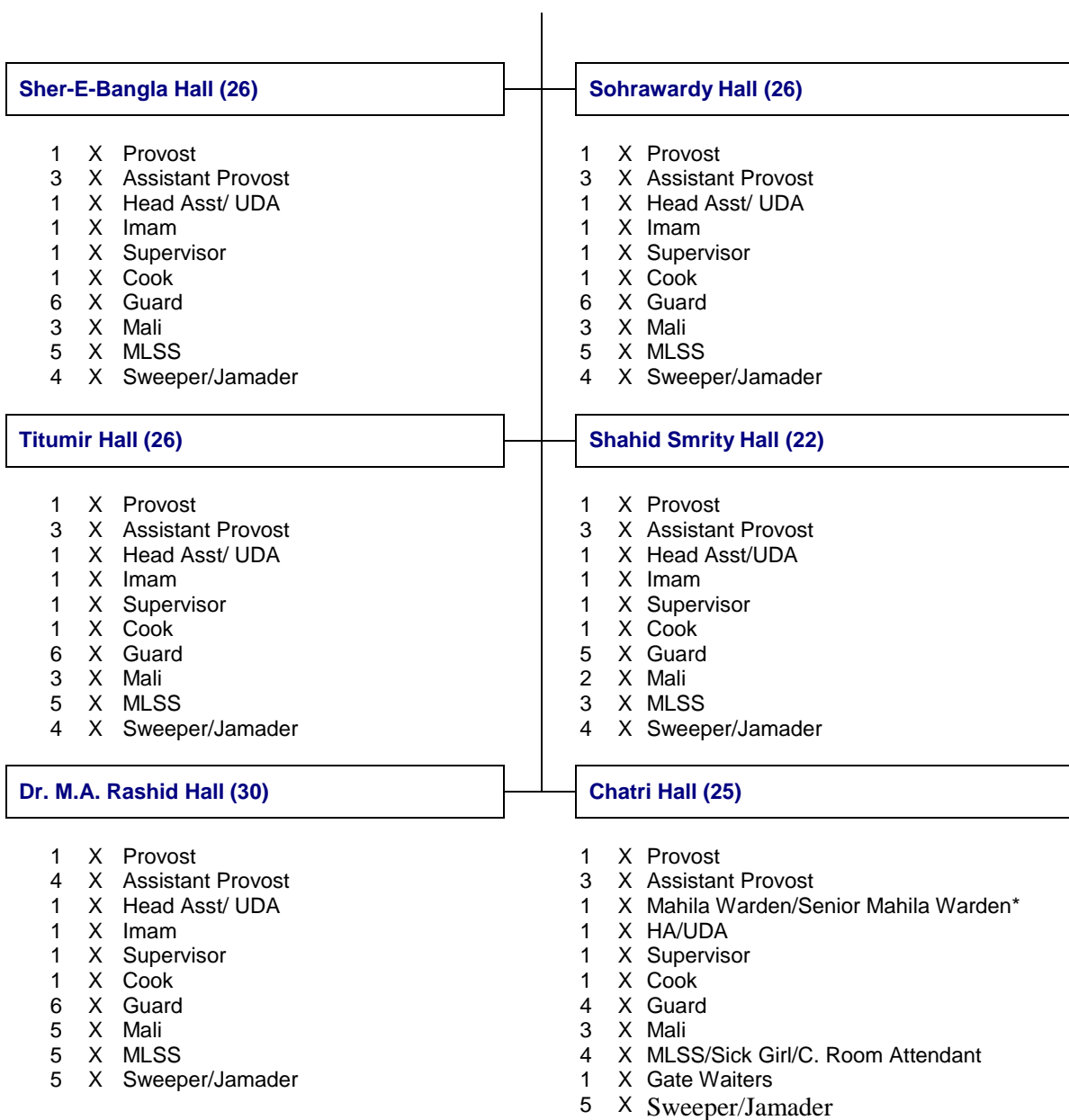
1	X	Librarian
1	X	Deputy Librarian
1	X	Programmer/Senior Programmer*
3	X	Assistant Librarian
1	X	Assistant Programmer/Programmer*
4	X	Cataloguer
1	X	UDA
4	X	Reprographic Operator
11	X	Library Assistant
2	X	LDA-cum-Typist
1	X	Asst. Reprographic Optr. Cum Sorter
3	X	Sorter
11	X	Library Attendant
2	X	MLSS

BUET ORGANOGRAM

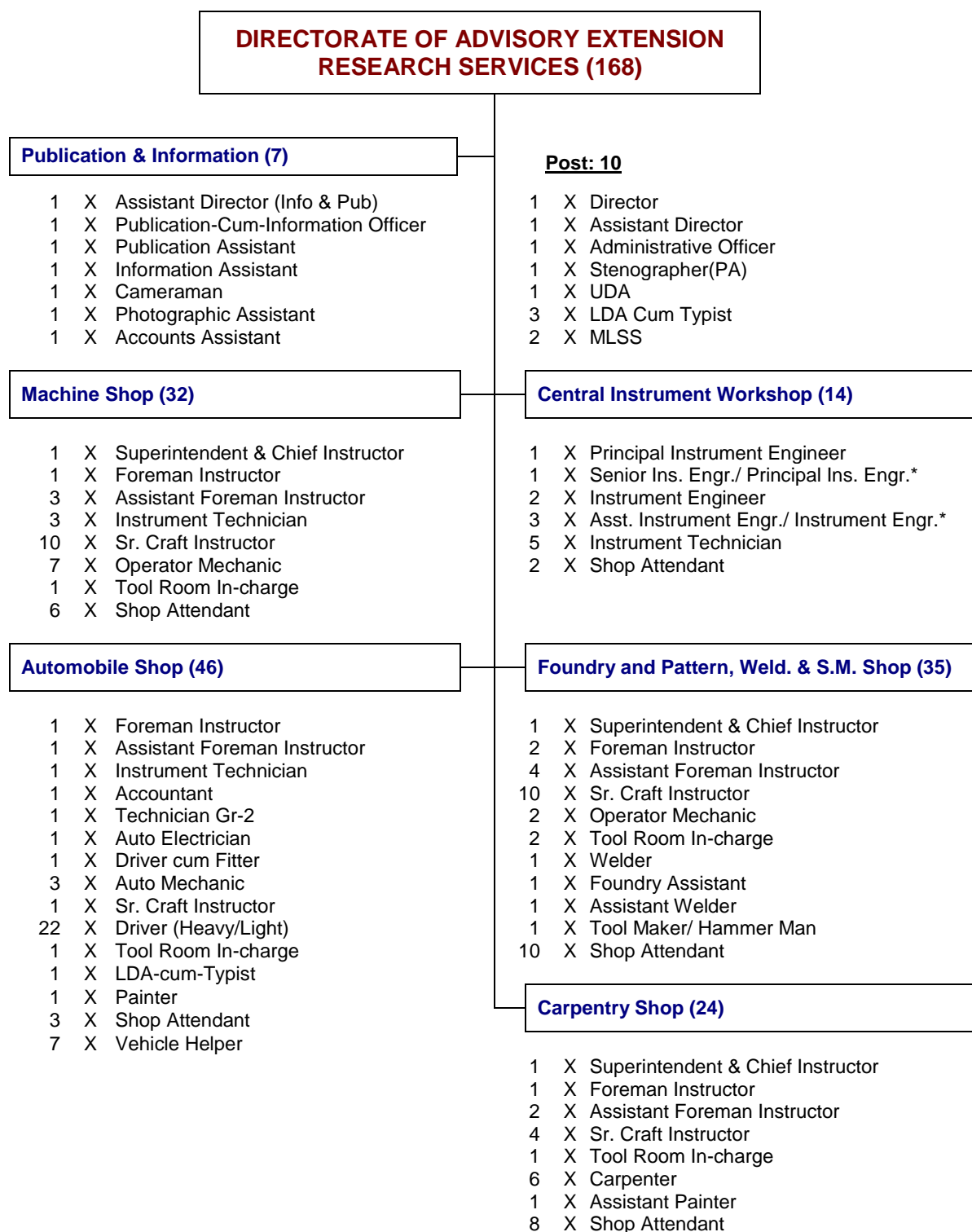


Cont.....

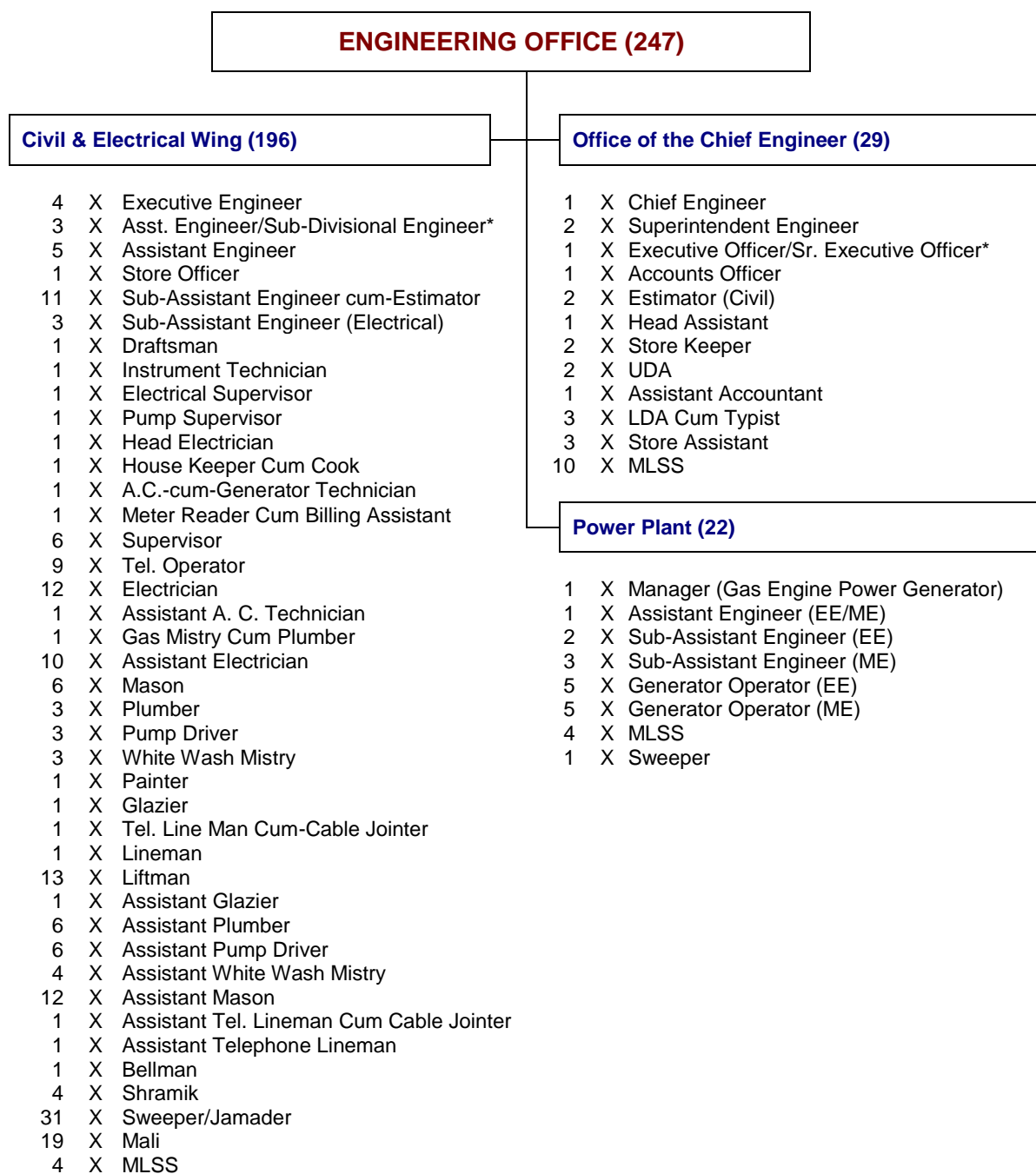
BUET ORGANOGRAM



BUET ORGANOGRAM



BUET ORGANOGRAM



BUET ORGANOGRAM

DIRECTORATE OF PLANNING & DEVELOPMENT (13)

1	X	Director
1	X	Deputy Director
2	X	Assistant Director
1	X	Research Officer
1	X	Procurement Officer
1	X	Head Assistant/UDA
1	X	Assistant Accountant
2	X	LDA-cum-Typist
1	X	Accounts Assistant
2	X	MLSS

DIRECTORATE OF CONTINUING EDUCATION (30)

1	X	Director
2	X	Chief Scientific Officer
3	X	Principal Scientific Officer
6	X	Senior Scientific Officer
1	X	Administrative Officer
6	X	Scientific Officer
1	X	Library-cum-Documentation Officer
1	X	Accountant
1	X	PA To Director
4	X	Data Entry Asst
2	X	Office Attendant
2	X	Library Attendant

BUREAU OF RESEARCH, TESTING & CONSULTATION (6)

1	X	Director
1	X	Accounts Officer
1	X	Assistant Accountant/UDA
1	X	Data Entry Assistant
1	X	Accounts Assistant
1	X	Office Attendant

BUET ORGANOGRAM

FACULTY OF ENGINEERING (229)

Post: 4

- 1 X Dean
- 1 X Administrative Officer
- 1 X LDA cum Typist
- 1 X MLSS

Deptt. Of Mat. & Metallurgical Engg. (35)

- 1 X Head
- 5 X Professor
- 5 X Associate Professor
- 5 X Assistant Professor
- 2 X Lecturer
- 2 X Asst. Instrument Engr./ Instrument Engr.*
- 1 X Asst. Experimental Engr./ Exp. Engineer*
- 1 X Foundry Instructor/Sr. Foundry Instructor*
- 2 X Sr. Craft Instructor
- 3 X Lab. Instructor Cum Store Keeper
- 1 X LDA Cum Typist
- 1 X Accounts Assistant Cum Typist
- 4 X Lab. Attendant
- 2 X MLSS

Deptt. of Chemical Engineering (48)

- 1 X Head
- 7 X Professor
- 7 X Associate Professor
- 7 X Assistant Professor
- 3 X Lecturer
- 1 X Experimental Engineer
- 1 X Asst. Experimental Engr./ Exp. Engineer*
- 1 X Asst. Technical Officer/ Technical Officer*
- 6 X Lab. Instructor Cum Store Keeper
- 1 X LDA Cum Typist
- 1 X Accounts Assistant Cum Typist
- 7 X Lab. Attendant
- 1 X Library Attendant
- 3 X MLSS
- 1 X Sweeper

Deptt. of Chemistry (29)

- 1 X Head
- 4 X Professor
- 5 X Associate Professor
- 4 X Assistant Professor
- 2 X Lecturer
- 1 X Store Keeper Grade-2
- 1 X Technician Grade-2
- 2 X Lab. Instructor Cum Store Keeper
- 1 X LDA Cum Typist
- 6 X Lab. Attendant
- 2 X MLSS

Deptt. of Physics (32)

- 1 X Head
- 5 X Professor
- 6 X Associate Professor
- 6 X Assistant Professor
- 3 X Lecturer
- 1 X Asst. Technical Officer/ Technical Officer*
- 2 X Lab. Instructor Cum Store Keeper
- 1 X LDA Cum Typist
- 5 X Lab. Attendant
- 2 X MLSS

Deptt. of Mathematics (27)

- 1 X Head
- 6 X Professor
- 6 X Associate Professor
- 5 X Assistant Professor
- 2 X Lecturer
- 1 X Data Entry Assistant
- 1 X LDA Cum Typist
- 3 X Lab. Attendant
- 2 X MLSS

Deptt. of Glass & Ceramics Engg. (36)

- 1 X Head
- 3 X Professor
- 3 X Associate Professor
- 2 X Assistant Professor
- 2 X Lecturer
- 1 X Senior Experimental Engineer
- 1 X Experimental Engineer
- 1 X Instrument Engineer
- 1 X Asst. Instrument Engr./ Instrument Engr.*
- 1 X UDA
- 1 X Data Entry Operator
- 1 X Library Assistant
- 5 X Lab. Instructor Cum Store Keeper
- 1 X LDA cum Typist
- 1 X Accounts Assistant
- 1 X Library Attendant
- 9 X Lab. Attendant
- 1 X MLSS

Deptt. of Petroleum & Min. Res. Engg. (18)

- 1 X Head
- 3 X Professor
- 3 X Associate Professor
- 2 X Assistant Professor
- 2 X Lecturer
- 1 X Sr. Exp. Engr./ Principal Exp Engr*
- 1 X Experimental Engineer
- 1 X Asst. Experimental Engr./ Exp. Engineer*
- 1 X LDA Cum Typist
- 2 X Lab. Attendant
- 1 X MLSS

BUET ORGANOGRAM

FACULTY OF CIVIL ENGINEERING (159)

Post: 4

- 1 X Dean
- 1 X Administrative Officer
- 1 X LDA cum Typist
- 1 X MLSS

Deptt. of Civil Engineering (116)

- 1 X Head
- 22 X Professor
- 22 X Associate Professor
- 22 X Assistant Professor
- 11 X Lecturer
- 1 X Instructor In Drafting/ Sr. Instructor In Dft.*
- 1 X Instructor in Survey/ Sr. Instructor in Surv.*
- 1 X Instructor in CAD/ Senior Instructor in CAD*
- 1 X Asst. Instrument Engr./ Instrument Engr.*
- 1 X Asst. Experimental Engr./ Exp. Engineer*
- 1 X Asst. Tech. Officer (Draft.)/ Tech. Officer (Draft.)*
- 1 X UDA
- 1 X Technician Grade -2
- 6 X Lab. Instructor Cum Store Keeper
- 1 X Library Assistant
- 1 X LDA cum Typist
- 1 X Accounts Assistant Cum Typist
- 1 X Library Attendant
- 12 X Lab. Attendant
- 8 X MLSS

Deptt. of Water Resources Engineering (39)

- 1 X Head
- 7 X Professor
- 7 X Associate Professor
- 7 X Assistant Professor
- 3 X Lecturer
- 1 X Asst. Experimental Engr./ Exp. Engineer*
- 1 X Asst. Tech. Officer (Draft.)/ Tech. Officer (Draft.)*
- 1 X Lab. Instructor Cum Store Keeper
- 1 X Library Assistant
- 1 X LDA cum Typist
- 1 X Accounts Assistant Cum Typist
- 6 X Lab. Attendant
- 2 X MLSS

BUET ORGANOGRAM

FACULTY OF MECHANICAL ENGINEERING (178)

Post: 4

- 1 X Dean
- 1 X Administrative Officer
- 1 X LDA cum Typist
- 1 X MLSS

Deptt. of Industrial Production Engg. (50)

- 1 X Head
- 10 X Professor
- 10 X Associate Professor
- 9 X Assistant Professor
- 4 X Lecturer
- 1 X Draftsman
- 1 X Technician Grade -2
- 2 X Lab. Instructor Cum Store Keeper
- 3 X Operator Mechanics
- 1 X LDA cum Typist
- 1 X Accounts Assistant Cum Typist
- 4 X Lab. Attendant
- 3 X MLSS

Deptt. of Mechanical Engineering (97)

- 1 X Head
- 18 X Professor
- 18 X Associate Professor
- 18 X Assistant Professor
- 9 X Lecturer
- 1 X Instructor In Drafting (ME)
- 1 X Lab Superintendent
- 1 X Asst. Instrument Engr./ Instrument Engr.*
- 1 X Draftsman
- 1 X UDA
- 1 X Technician Grade -2
- 1 X Library Assistant
- 7 X Lab. Instructor Cum Store Keeper
- 1 X LDA cum Typist
- 1 X Accounts Assistant Cum Typist
- 11 X Lab. Attendant
- 6 X MLSS

Deptt. of Naval Arch. & Marine Engg. (27)

- 1 Head
- 5 Professor
- 5 Associate Professor
- 4 Assistant Professor
- 2 Lecturer
- 1 Assistant Foreman
- 1 Draftsman
- 2 Lab. Instructor Cum Store Keeper
- 1 LDA cum Typist
- 3 Lab. Attendant
- 2 MLSS

BUET ORGANOGRAM

FACULTY OF ELECTRICAL & ELECTRONIC ENGINEERING (202)

Post: 5

- 1 X Dean
- 1 X Administrative Officer
- 1 X LDA cum Typist
- 1 X Library Attendant
- 1 X MLSS

Deptt. of Electrical & Electronic Engg. (116)

- 1 X Head
- 21 X Professor
- 22 X Associate Professor
- 21 X Assistant Professor
- 11 X Lecturer
- 1 X Asst. Instrument Engr./ Instrument Engr.*
- 1 X Asst. Tech. Officer (Draft.)/ Tech. Officer (Draft.)*
- 7 X Assistant Technical Officer/ Technical Officer*
- 1 X UDA
- 1 X UDA Cum Typist
- 1 X Technician Grade-2
- 5 X Lab. Instructor Cum Store Keeper
- 1 X Library Assistant
- 1 X Accounts Assistant Cum Typist
- 13 X Lab. Attendant
- 8 X MLSS

Deptt. of Computer Science & Engineering (82)

- 1 X Head
- 16 X Professor
- 15 X Associate Professor
- 15 X Assistant Professor
- 9 X Lecturer
- 1 X Programmer/Senior Programmer*
- 1 X Assistant Programmer/Programmer*
- 6 X Asst. Technical Officer/ Technical Officer*
- 1 X Technician Grade -2
- 1 X Data Entry Assistant
- 1 X Lab. Instructor Cum Store Keeper
- 1 X LDA cum Typist
- 8 X Lab. Attendant
- 6 X MLSS

BUET ORGANOGRAM

FACULTY OF ARCHITECTURE (114)

Post: 4

- 1 X Dean
- 1 X Administrative Officer
- 1 X UDA
- 1 X MLSS

Deptt. of Architecture (59)

- 1 X Head
- 12 X Professor
- 12 X Associate Professor
- 12 X Assistant Professor
- 6 X Lecturer
- 1 X Asst. Tech. Officer (Draft.)/ Tech. Officer (Draft.)*
- 1 X Lab. Instructor Cum Store Keeper
- 1 X Library Assistant
- 1 X LDA cum Typist
- 1 X Accounts Assistant Cum Typist
- 7 X Lab. Attendant
- 4 X MLSS

Deptt. of Urban & Regional Planning (32)

- 1 X Head
- 7 X Professor
- 6 X Associate Professor
- 6 X Assistant Professor
- 3 X Lecturer
- 1 X Asst. Technical Officer/ Technical Officer*
- 1 X UDA
- 1 X Library Assistant
- 1 X LDA cum Typist
- 3 X Lab. Attendant
- 2 X MLSS

Deptt. of Humanities (19)

- 1 X Head
- 5 X Professor
- 4 X Associate Professor
- 3 X Assistant Professor
- 2 X Lecturer
- 1 X Lab. Instructor Cum Store Keeper
- 1 X LDA cum Typist
- 2 X MLSS

BUET ORGANOGRAM

INSTITUTE OF INFORMATION COMMUNICATION TECHNOLOGY (45)

1	X	Director
2	X	Associate Director
3	X	Professor
2	X	Associate Professor
2	X	Assistant Professor
1	X	Lecturer
2	X	System Analyst
1	X	System Administrator
1	X	Senior Programmer
1	X	Programmer/ Senior Programmer*
1	X	Administrative Officer
1	X	Instrument Engineer
2	X	Assistant Programmer/ Programmer*
1	X	Asst. Maintenance Engr./ Maintenance Engr.*
4	X	Internet Serv. Officer/ Sr. Int. Serv. Officer*
1	X	Prog Coordination Off./ Sr. Prog Co. Off.*
4	X	Assistant Technical Officer/ Technical Officer*
2	X	Data Entry Operator
2	X	Omr & Print Operator
1	X	Library Assistant
2	X	A.C. Cum Generator Technician
1	X	LDA Cum Typist
1	X	Driver
3	X	Lab: Attendant
3	X	Cleaner/MLSS

INSTITUTE OF WATER & FLOOD MANAGEMENT (53)

1	X	Director
8	X	Professor
8	X	Associate Professor
7	X	Assistant Professor
4	X	Lecturer
1	X	Administrative Officer
1	X	Assistant Engineer
1	X	Draftsman
1	X	Accountant
1	X	Stenographer (PA)
1	X	Lab Ins. cum Store Keeper
1	X	Library Asst
2	X	Lab Asst
1	X	LDA Cum Typist
1	X	Tracer
1	X	Mechanic
7	X	Lab: Attendant
4	X	MLSS
2	X	Sweeper

BUET ORGANOGRAM

INSTITUTE OF APPROPRIATE TECHNOLOGY (55)

1	X	Director
3	X	Research Professor
3	X	Research Associate Professor
2	X	Research Assistant Professor
1	X	Design Foreman/ Deputy Director*
2	X	Research Lecturer
1	X	Administrative Officer
1	X	Program Officer
1	X	Publication Officer
1	X	Foreman
1	X	Assistant Foreman
1	X	Draftsman
8	X	Technician Gr-2
1	X	Documentation Assistant
1	X	Cataloguer
1	X	Stenographer (PA)
2	X	UDA
1	X	Steno Typist
1	X	Accounts Assistant
3	X	LDA Cum Typist
1	X	Driver
1	X	Dup. Mech. Operator
7	X	Lab: Attendant
2	X	Library Attendant
3		Guard
4		MLSS
1		Sweeper

ACCIDENT RESEARCH INSTITUTE (28)

1	X	Director
1	X	Principal Research
1	X	Professor
2	X	Associate Professor
2	X	Assistant Professor
6	X	Lecturer
1	X	Programmer/Senior Programmer*
1	X	Assistant Programmer/Programmer*
1	X	Administrative Officer
1	X	Instrument Operator/Technician
1	X	Accountant
1	X	Personal Assistant (PA)
3	X	Data Entry Operator
2	X	Driver
3	X	Office Attendant
1	X	Cleaner

BUET ORGANOGRAM

BUET-JAPAN INSTITUTE OF DISASTER PREVENTION AND URBAN SAFETY (31)

1	X	Director
2	X	Associate Director
2	X	Research Fellow
1	X	Programmer/Senior Programmer*
8	X	Associate Research Fellow
1	X	Instrument Engineer
1	X	Administrative Officer
1	X	Assistant Programmer/Programmer*
1	X	Assistant IT Officer
1	X	Assistant Instrument Engineer
1	X	Assistant Instrument Engineer (Civil)
1	X	Data Entry Operator
1	X	Lab. Instructor Cum Store Keeper
1	X	Accounts Assistant
2	X	Driver
2	X	Laboratory Attendant
1	X	Library Attendant
1	X	Office Attendant
1	X	MLSS
1	X	Cleaner

CENTER FOR ENERGY STUDIES (4)

1	X	Director
1	X	Asst. Experimental Engr./ Exp. Engineer*
1	X	LDA cum Typist
1	X	MLSS

CENTER FOR ENVIRONMENTAL & RESOURCE MANAGEMENT (5)

1	X	Director
1	X	EMIS Specialist
1	X	Administrative Officer
1	X	Accounts Officer
1	X	MLSS

BUET ORGANOGRAM

BIO-MEDICAL ENGINEERING CENTER (1)

1 X Director

INTERNATIONAL TRAINING NETWORK CENTER (13)

1 X Director
1 X Manager
1 X Research Officer (Trn./WShop)
1 X Research Officer (Tech./Research)
1 X Information & Documentation Officer
2 X Research Officer
1 X Administrative & Accounts Officer
1 X Office Secretary
2 X Driver
2 X Office Attendant

CENTRAL TEACHING POOL (CTP)

Post: 118

118 X 20% of Total Teaching Post

CENTRAL EMPLOYMENT POOL (CEP)

Post: 36

12 X Lab. Attendant
12 X MLSS
12 X Sweeper/Jamader

Grand Total = 2429

* Convertible Posts